

## THE ELIMINATOR

Residential basement dehumidification AND air exchange system.

- **ELIMINATES:** Excess humidity, mold, mildew, odours & depressurization  
*The Eliminator is two products in one.*
- **SUMMER OPERATION** - the *Eliminator's* exhaust only mode eliminates excess basement humidity and associated problems such as cold damp air, condensation, musty odours and mildew.
- **HEATING SEASON:** - the *Eliminator's* air exchanger mode gives controlled ventilation and dehumidification without causing negative pressure. In air exchange mode, the *Eliminator* improves indoor air quality by exhausting stale air, odours and humidity while introducing fresh outdoor air that is tempered by the room air before being introduced to the living space.
- Compare the *Eliminator* to alternative solutions...

## Compare the *Eliminator*

<b>FEATURE</b>	Dehumidifier	Air-Extractor	<i>Eliminator</i>
1. Removed stale air	No	Yes	YES
2. Dehumidifies	Yes	Yes	YES
3. Power consumption	350 W	45-115 W	Only about \$3/mo.* (approx. \$.10 kW h)
4. Summer operation	Yes	Yes	YES
5. Winter operation	Yes	NO	YES
6. Potential furnace backdrafting	Low	HIGH	LOW
7. Depressurizes	No	YES	NO
8. Installs in crawl space	No	Yes	YES
9. Intermittent operation	Yes	no	YES





## *Eliminator* Benefits

- **150 CFM capacity**
- **SUMMER OPERATION – Use in “exhaust only” mode OR...**
- **WINTER OPERATION – Adjustable fresh air intake. Does not contribute to backdrafting of combustion**
- **ONE SIZE FITS ALL – Adjustable 4-8 ft high**
- **ADJUSTS TO ANY SIZE HOME – Variable speed control controls humidity with adjustable dehumidistat**
- **ALUMINUM CABINET – Lasting appearance and light weight**
- **MAINTENANCE FREE**
- **COMPLETE "DIY" KIT All you need to install in LESS THAN 2 HOURS**
- **ENERGY EFFICIENCY – Lower operating cost than dehumidifiers**
- **CLEAN, FRESH AIR – Outside air is filtered**

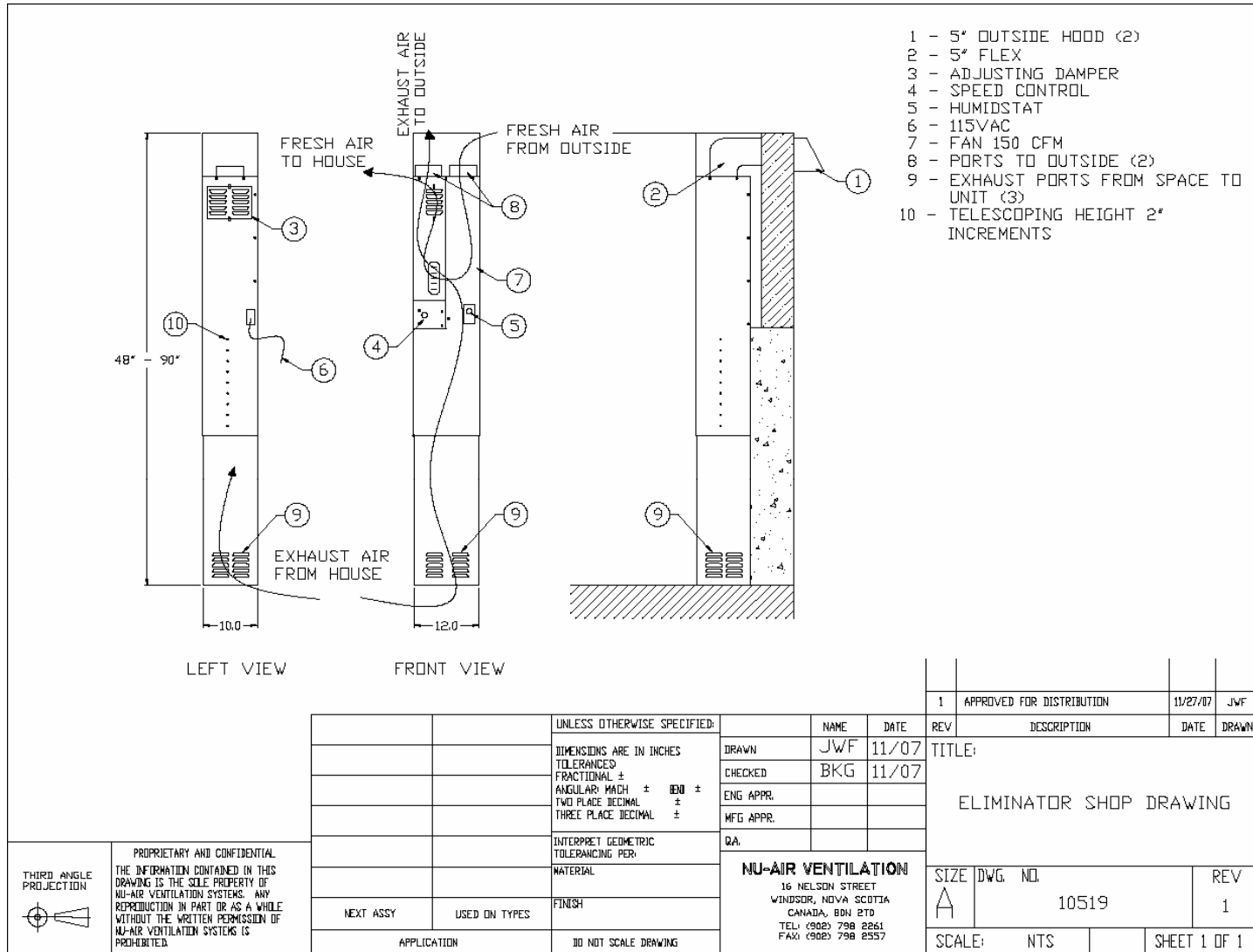
# Eliminator Specifications

WxD	12x10" (30.5x25.4 cm)
Height	48-90" (193-229 cm)
Weight	23 lb (10.5 kg)
Air Flow—Exhaust Mode	60-150 cfm*
Air flow—Exchange Mode	30-80 cfm*
Area	3000 sq. ft.
Watts/Amps/Volts	85/0.56/115 VAC
Cabinet	.032 aluminum—white enamel
Speed Control	40-100%
Dehumidistat	30-80%
Approvals	CSA, Cus

\* cfm ratings based upon typical installation



# Eliminator Shop Drawing



THIRD ANGLE PROJECTION

PROPRIETARY AND CONFIDENTIAL  
 THE INFORMATION CONTAINED IN THIS DRAWING IS THE SOLE PROPERTY OF NU-AIR VENTILATION SYSTEMS. ANY REPRODUCTION IN PART OR AS A WHOLE WITHOUT THE WRITTEN PERMISSION OF NU-AIR VENTILATION SYSTEMS IS PROHIBITED.

		UNLESS OTHERWISE SPECIFIED:
		DIMENSIONS ARE IN INCHES
		TOLERANCES
		FRACTIONAL ±
		ANGULAR: MACH ± 100 ±
		TWO PLACE DECIMAL ±
		THREE PLACE DECIMAL ±
		INTERPRET GEOMETRIC TOLERANCING PER:
		MATERIAL
		FINISH
NEXT ASSY	USED ON TYPES	
APPLICATION		DO NOT SCALE DRAWING

	NAME	DATE
DRAWN	JWF	11/07
CHECKED	BKG	11/07
ENG APPR.		
MFG APPR.		
QA		
<b>NU-AIR VENTILATION</b>		
16 NELSON STREET		
WINDSOR, NOVA SCOTIA		
CANADA, B0N 2T0		
TEL: (902) 798 2261		
FAX: (902) 798 2557		

1	APPROVED FOR DISTRIBUTION	11/27/07	JWF
REV	DESCRIPTION	DATE	DRAWN
TITLE: ELIMINATOR SHOP DRAWING			
SIZE	DWG. NO.	REV	
A	10519	1	
SCALE:	NTS	SHEET 1 OF 1	