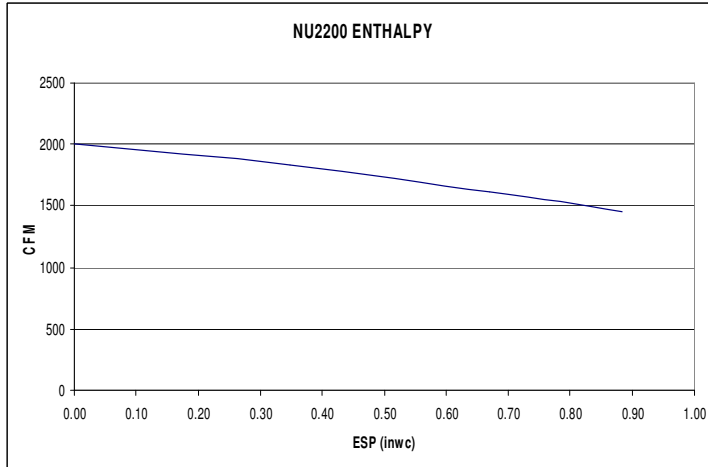


NU2200 – ERV PRODUCT INFORMATION SHEET



CABINET: .22 ga galvanized steel with 1” foil faced fibreglass insulation. .050 prepainted white aluminum finish optional.

ENERGY RECOVERY CORE: Enthalpy Core – Standard

BLOWERS: FC DWDI 810 Belt Drive

CERTIFICATION: CSA SPE-1000, AHRI 1060

DEFROST METHOD:

Fan shut down defrost - The exhaust air after the core is monitored. When below freezing, a defrost cycle is activated. The supply fan shuts down while the exhaust fan continues to move warm air through the core. When the exhaust air rises above 7 °C (45 °F) the HRV reverts to exchange mode.

ADDITIONAL FEATURES:

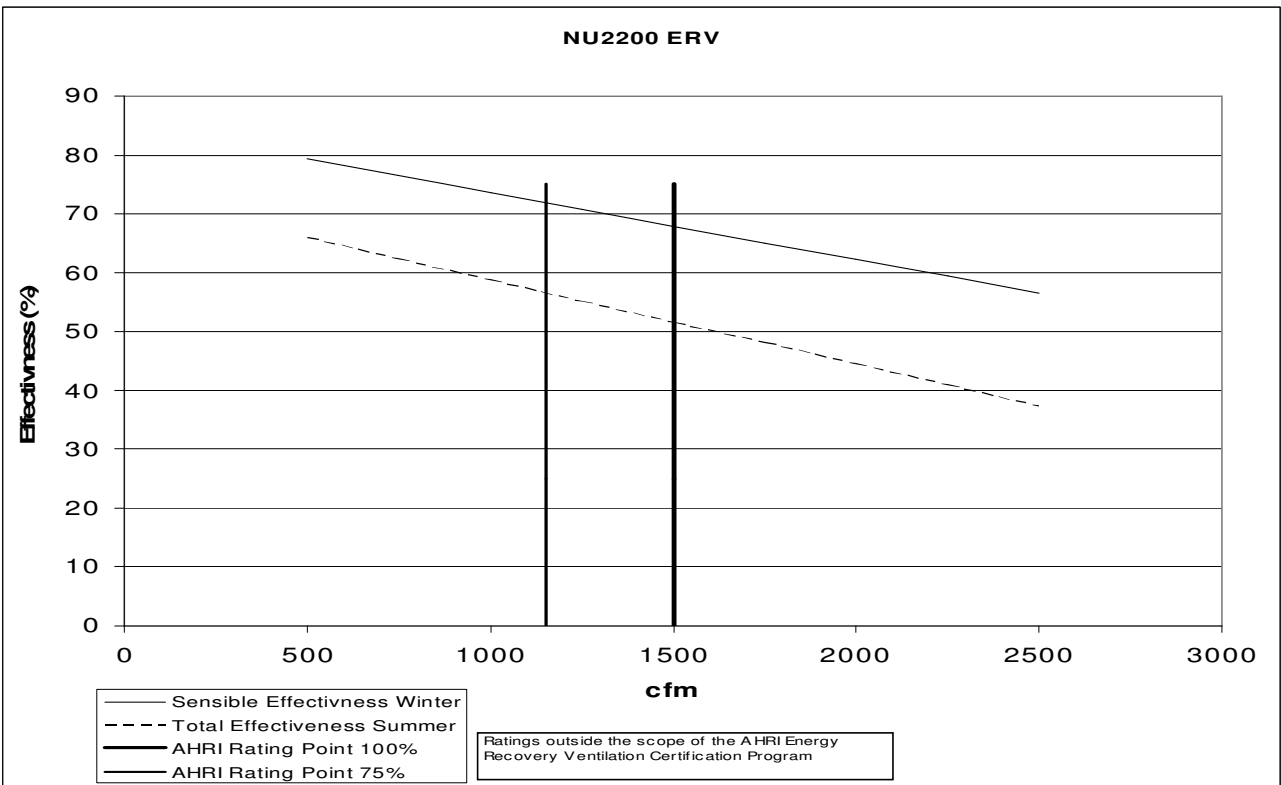
- Local non-fused disconnect
- Local On-Off (single speed)
- Split motor pulley for field adjustment of fan rpm
- Drain kit included
- 208-230 V single point internal connection
- 1" pleated filters, 30%-40% ASHRAE dust spot efficiency – STANDARD
- Two section core for easy removal & cleaning
- Base rail complete with tripping brackets

NU2200	
AIR FLOW	1450cfm @ 0.88 in. w.c. 684 l/s @ 220Pa
DUCT SIZE W x H	24 x 12 in. 610 x 305 mm
CORE SIZE L x W	24 x 24 x 28 in. 607 x 607 x 711 mm
CABINET SIZE (LxHxD)	64 X 38 X30
BLOWERS	810
Belts (2)	B36
HORSE POWER	1.5
VOLTS	208-230/1/60 208/3/60 – optional
AMPS	16.8-16.4
RPM/SPEEDS	1725/1

CUSTOMIZATION

Optional Reverse door configuration..

WARRANTY: Subject to applicable consumer protection legislation Nu-Air Ventilation Systems Inc. warrants that the unit will be free from defective materials and workmanship for a period of two (2) years provided installation is in accordance with the instructions. 15 year warranty on plastic cores and one 5 year for enthalpy cores.



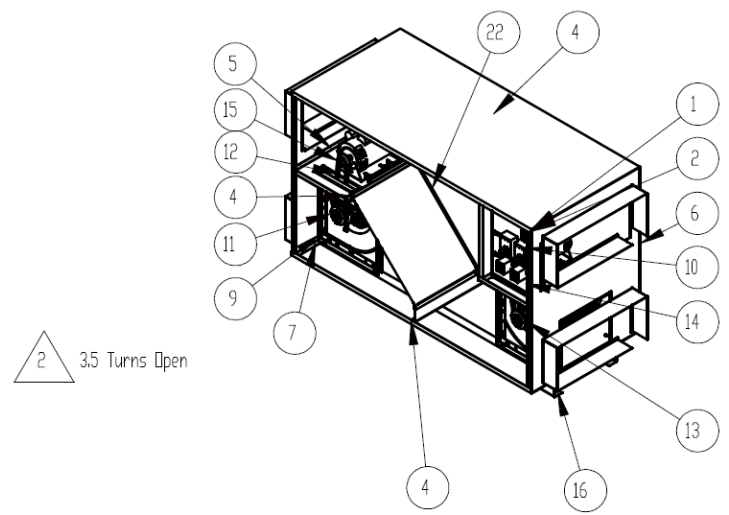
Energy recovery component is certified by AHRI to AHRI Standard 1060. Actual performance in packaged equipment may vary.

Model no.	EXC-24S-15H-250
Type	Plate
Nominal Air Flow (scfm)	750
Pressure drop (inches)	0.63

Leakage Ratings	Diff. Pressure	EATR %	OACF
Test 1	-0.5	0.00	1.00
Test 2	0	0.00	1.00
Test 3	0.5	0.00	1.00

Thermal Effectiveness Ratings at 0" Pressure Differential			
	Sensible	Latent	Total
100% air Flow Heating	68	38	58
75% air Flow Heating	72	40	61
100% air Flow cooling	81	34	52
75% air Flow Cooling	87	38	57
	Net Sensible	Net Latent	Net Total
100% air Flow Heating	68	38	58
75% air Flow Heating	72	40	61
100% air Flow cooling	81	34	52
75% air Flow Cooling	87	38	57

ITEM NO.	PART NUMBER	DESCRIPTION	VENDOR	QTY.
1	70105	End		2
2	wrap	22 Ga Galv		1
3	top core guide	22 Ga Galv		1
4	bottom core guide	22 Ga Galv		1
5	70102	divider		1
6	70102	divider		1
7	70101	Roll		2
4	core	24x24x28 Poly		1
9	50071	810 BLOWER ASSEMBLY	Delhi	2
10	50120	1.5 hp ODP 208-240/1 56H	GERBEC	2
11	50125	blower pulley MBL373 4 8500000 and bushing 8500062	Delhi	2
12	50121	B Belt	Delhi	1
13	BEL11	B Belt	Delhi	1
14	50118	Brush Seal		4
15	50123	Motor pulley MVL34X5_8_3L3 8500059	Delhi	2
16	70104	24x12 Collar		4
17	70107	Electrical Box Right		1
18	50129	dn rail		2
19	50128	Omron Contactor J7KN-10-10		2
20	50015	BDSG 20 VA	Hammond	1
21	50130	Omron Circuit Breaker J7MN- 12-10		2
22	50017	23.5x13.5x1 Pleated Filter		4



1	Electrical	208-240/1 VAC	FLA 16.8	1 phase	Standard
		208/3	FLA 11.0	3 phase	Optional
	Construction	single wall	Galv 20 Ga	Foil Face Ins. R4	

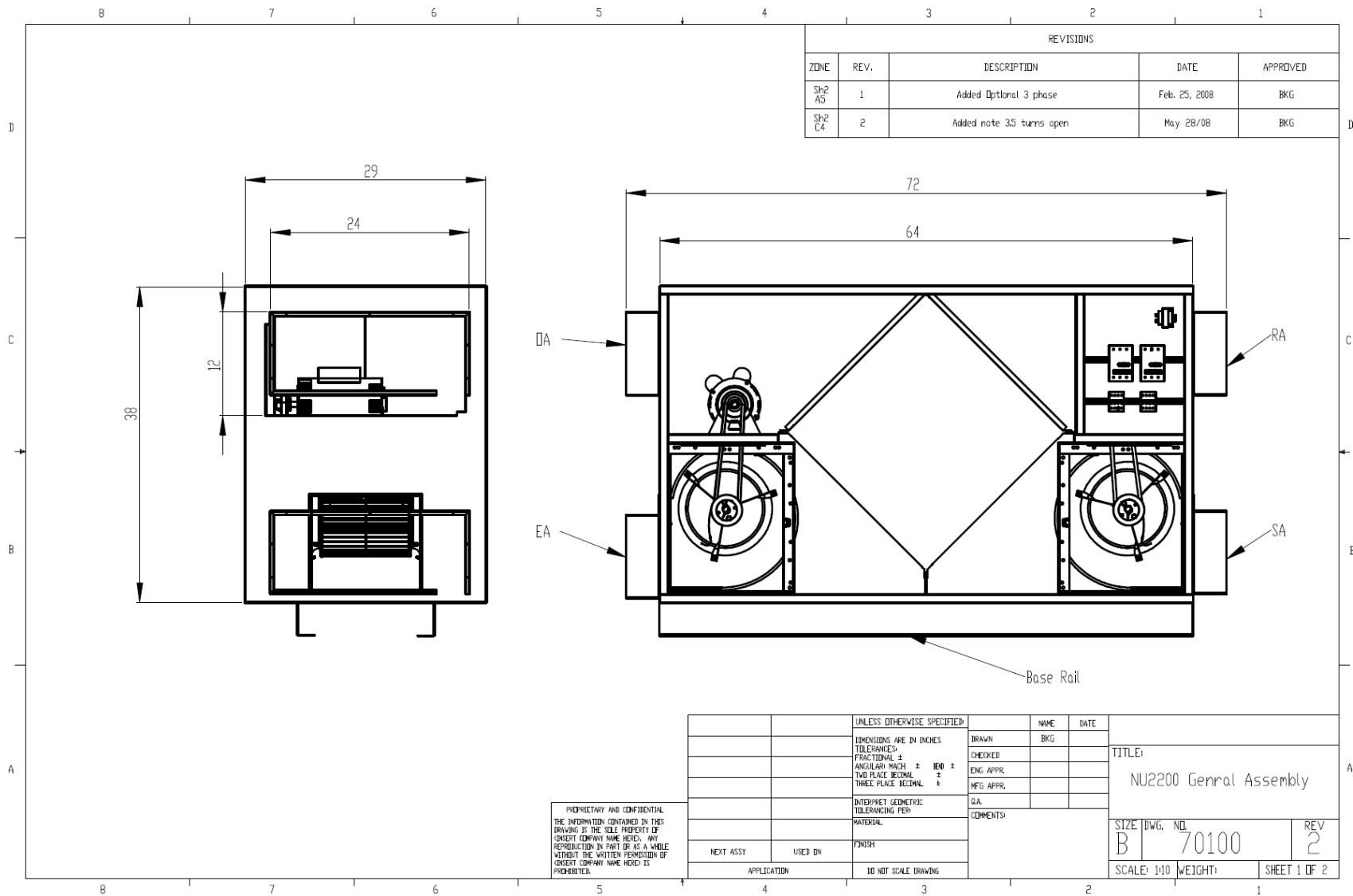
PROPRIETARY AND CONFIDENTIAL
THE INFORMATION CONTAINED IN THIS
DRAWING IS THE SOLE PROPERTY OF
ENERGY COMPANY NAME HERE. ANY
REPRODUCTION IN PART OR AS A WHOLE
WITHOUT THE WRITTEN PERMISSION OF
ENERGY COMPANY NAME HERE IS
PROHIBITED.

UNLESS OTHERWISE SPECIFIED:		NAME	DATE
DIMENSIONS ARE IN INCHES		BROWN	BKG
TOLERANCES:		CHECKED	
FRACTIONAL ±	± .000 ±	ENG. APPR.	
ANGULAR MATCH	± .000 ±	MFG APPR.	
TWO PLACE DECIMAL	± .00	D.A.	
THREE PLACE DECIMAL	± .000	EDMENT	
INTERPRET GEOMETRIC TOLERANCING PER:			
MATERIAL			
FINISH			
NU2200			
NEXT ASSY	USED ON		
APPLICATION	DO NOT SCALE DRAWING		

TITLE: NU2200 Genral Assembly		
SIZE DWG. NO.	REV	
B 70100	2	
SCALE: 1:20	WEIGHT:	SHEET 2 OF 2

Note: Nu-Air reserves the right to change specifications without notice.

Revised July 21, 2008



REVISIONS				
ZONE	REV.	DESCRIPTION	DATE	APPROVED
Sh2 A5	1	Added Optional 3 phase	Feb. 25, 2008	BKG
Sh2 C4	2	Added note 3.5 turns open	May 28/08	BKG

UNLESS OTHERWISE SPECIFIED:		NAME	DATE	TITLE: NU2200 Genral Assembly
DIMENSIONS ARE IN INCHES		DRAWN	BKG	
TOLERANCES:		CHECKED		
FRACTIONAL ±		ENG APPR.		
ANGULARS MATCH ± .000 ±		MFG APPR.		SIZE DWG. NO. 70100 B
TWO PLACE DECIMAL ±		QA		
THREE PLACE DECIMAL ±		COMMENTS:		REV 2
INTERPRET GEOMETRIC TOLERANCING PER:				SCALE: 1:10 WEIGHT:
MATERIAL:				SHEET 1 OF 2
FINISH:				
NEXT ASSY	USED IN			
APPLICATION		DO NOT SCALE DRAWING		

PROPRIETARY AND CONFIDENTIAL
THE INFORMATION CONTAINED IN THIS
DRAWING IS THE SOLE PROPERTY OF
CNGERT COMPANY NAME HERE. ANY
REPRODUCTION IN PART OR AS A WHOLE
WITHOUT THE WRITTEN PERMISSION OF
CNGERT COMPANY NAME HERE IS
PROHIBITED.

Note: Nu-Air reserves the right to change specifications without notice.

Revised June 12, 2008