

NU2540 ERV - ROOF MOUNT

CABINET:

- Double wall, 22 Ga galvanized steel outer finish
- Optional .050 prepainted white aluminum finish.

HEAT EXCHANGER CORE:

- **HRV** - polypropylene core with sensible energy transfer
- **ERV** - enthalpy cross flow heat exchange core with the unique ability to *transfer both latent and sensible energy*

BLOWERS: Belt drive performance blowers FC, DWDI

ADDITIONAL FEATURES:

- Temperature activated fan shut down defrost method
- Face and Bypass damper defrost
- **Economizer**

FILTER:

- STANDARD - 2" pleated filters, 30%-40% ASHRAE dust spot efficiency
- OPTIONS - Electrostatic, charcoal pads

CUSTOMIZATION:

If an application requires a door or ports to be located differently, simply specify the configuration.

WARRANTY:

- Fifteen years on Polypropylene Cores
- Five year on Enthalpy Cores
- Two years on all other components.

	NU2540
DUCT SIZE (L x W)	32 x 16 in. 813 x 406 mm
CORE SIZE (L x W)	24x 24 x42 in. 607x607x1067 mm
CABINET SIZE (L x H x D)	91 x 45 x 45 in. 2311x1143x1143 mm
BLOWERS (FWD CURVE DIRECT DRIVE)	815
PSC	
HORSE POWER	Specify
VOLTS	
AMPS	
RPM	1725/1140
WEIGHT	1000LBS

NU2540 ERV

NU2540 AIRFLOW PERFORMANCE AIRFLOW PERFORMANCE

CFM		ESP = 0		ESP = 0.2		ESP = 0.6		ESP = 1.0		ESP = 1.2		ESP = 1.4		ESP = 1.75		ESP = 2.0	
		BHP	RPM	BHP	RPM	BHP	RPM	BHP	RPM	BHP	RPM	BHP	RPM	BHP	RPM	BHP	RPM
2400	1 hp	0.32	440	0.46	535	0.76	695	0.97	840	1.12	898	1.27	951	1.54	1035	1.74	1090
2500		0.37	461	0.51	552	0.82	707	1.04	851	1.19	908	1.35	962	1.59	1044	1.83	1101
2600		0.42	481	0.56	568	0.88	719	1.11	862	1.27	919	1.43	972	1.71	1056	1.92	1111
2700		0.47	500	0.61	584	0.95	731	1.18	872	1.34	930	1.51	982	1.8	1066	2.02	1121
2800		0.52	517	0.67	599	1.01	743	1.25	883	1.42	939	1.59	992	1.89	1076	2.11	1131
2900		0.58	535	0.73	614	1.08	755	1.33	893	1.50	949	1.67	1002	1.99	1086	2.25	1149
3000		0.63	552	0.80	629	1.16	766	1.40	902	1.58	959	1.76	1011	2.08	1095	2.31	1150
3100		0.70	572	0.87	647	1.24	781	1.49	914	1.67	970	1.86	1022	2.19	1106	2.43	1160
3200		0.77	589	0.94	661	1.32	792	1.57	923	1.76	979	1.95	1031	2.29	1115	2.53	1170
3300		0.85	608	1.02	678	1.41	806	1.66	934	1.86	990	2.05	1042	2.40	1125	2.65	1180
3400	0.93	627	1.11	695	1.51	820	1.76	946	1.96	1001	2.16	1052	2.51	1135	2.70	1190	
3500	1.5 hp	1.01	645	1.20	711	1.60	834	1.85	956	2.06	1011	2.27	1063	2.63	1146	2.90	1200
3600		1.10	662	1.29	727	1.70	847	1.95	967	2.17	1022	2.38	1073	2.75	1155		
3700		1.20	683	1.39	746	1.82	863	2.07	980	2.28	1034	2.50	1085	2.89	1167		
3800		1.29	700	1.49	761	1.93	876	2.17	990	2.39	1043	2.62	1095				
3900		1.40	719	1.61	779	2.05	892	2.29	1003	2.52	1055	2.75	1106				
4000		1.51	738	1.72	797	2.18	906	2.42	1015	2.65	1067	2.88	1117				

** Table values above are for Polypropylene Core ONLY. Consult factory for Enthalpy Core data. **



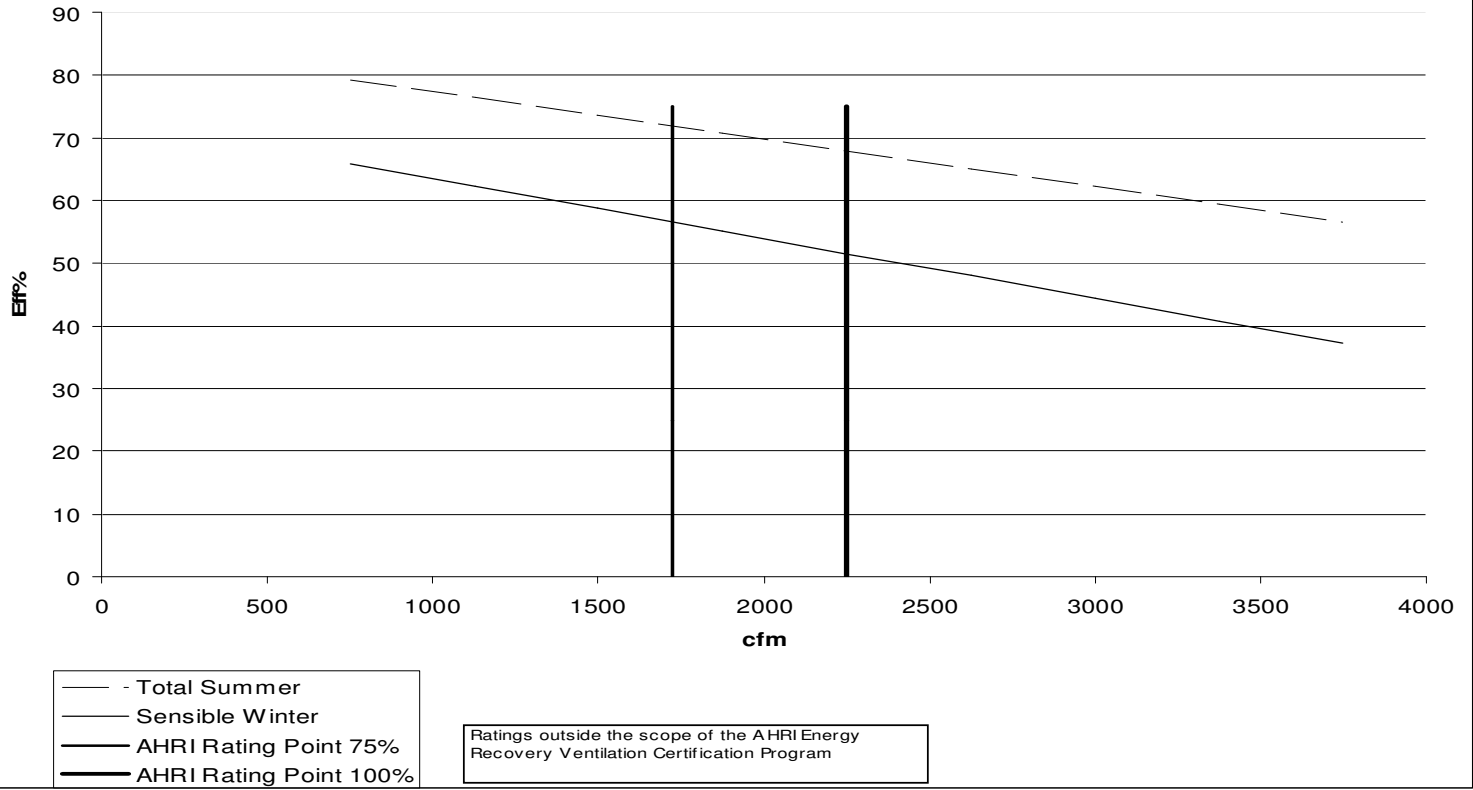
Energy recovery component is certified by AHRI to AHRI Standard 1060. Actual performance in packaged equipment may vary.

Model no.	EXC-24S-15H-250
Type	Plate
Nominal Air Flow (scfm)	750
Pressure drop (inches)	0.63

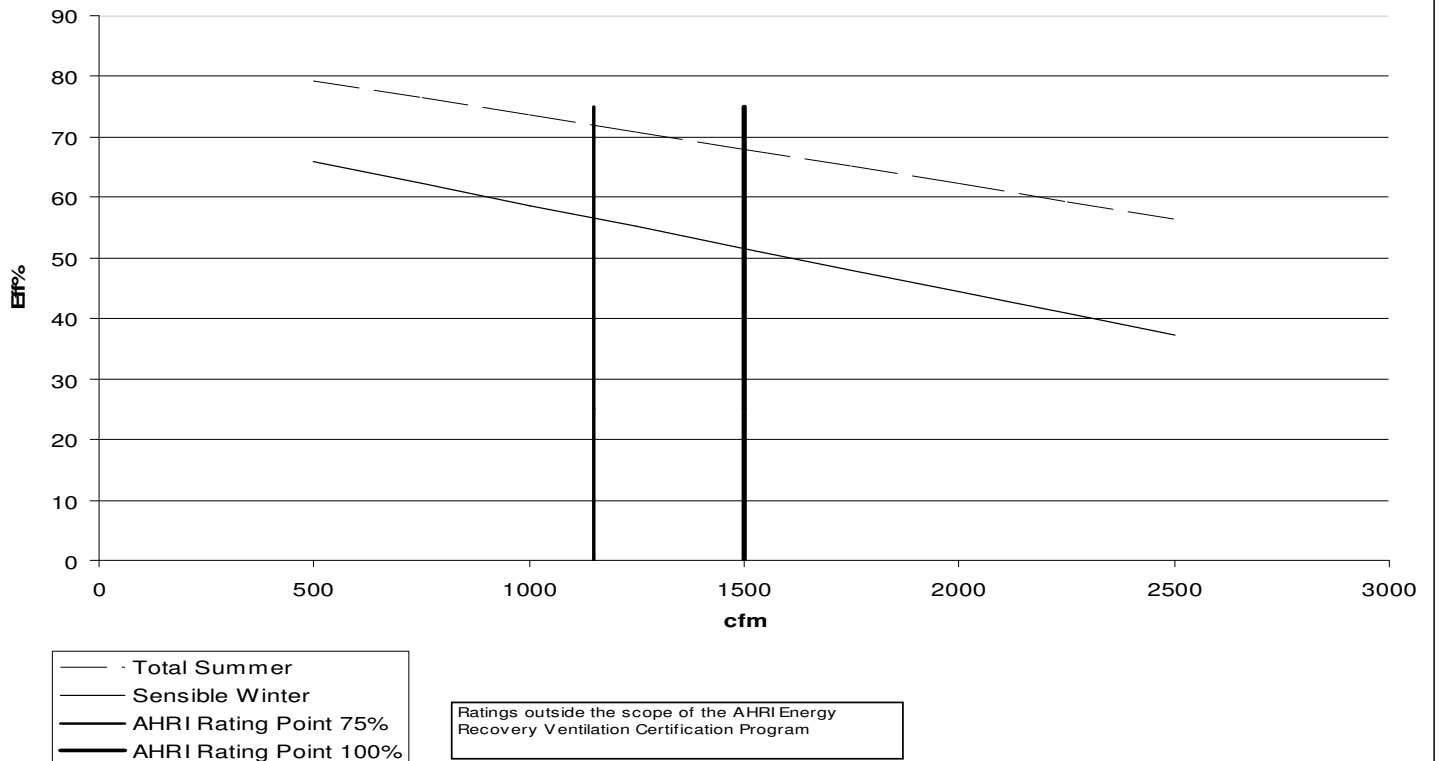
Leakage Ratings	Diff. Pressure	EATR %	OACF
Test 1	-0.5	0.00	1.00
Test 2	0	0.00	1.00
Test 3	0.5	0.00	1.00

Thermal Effectiveness Ratings at 0" Pressure Differential			
	Sensible	Latent	Total
100% air Flow Heating	68	38	58
75% air Flow Heating	72	40	61
100% air Flow cooling	81	34	52
75% air Flow Cooling	87	38	57
	Net Sensible	Net Latent	Net Total
100% air Flow Heating	68	38	58
75% air Flow Heating	72	40	61
100% air Flow cooling	81	34	52
75% air Flow Cooling	87	38	57

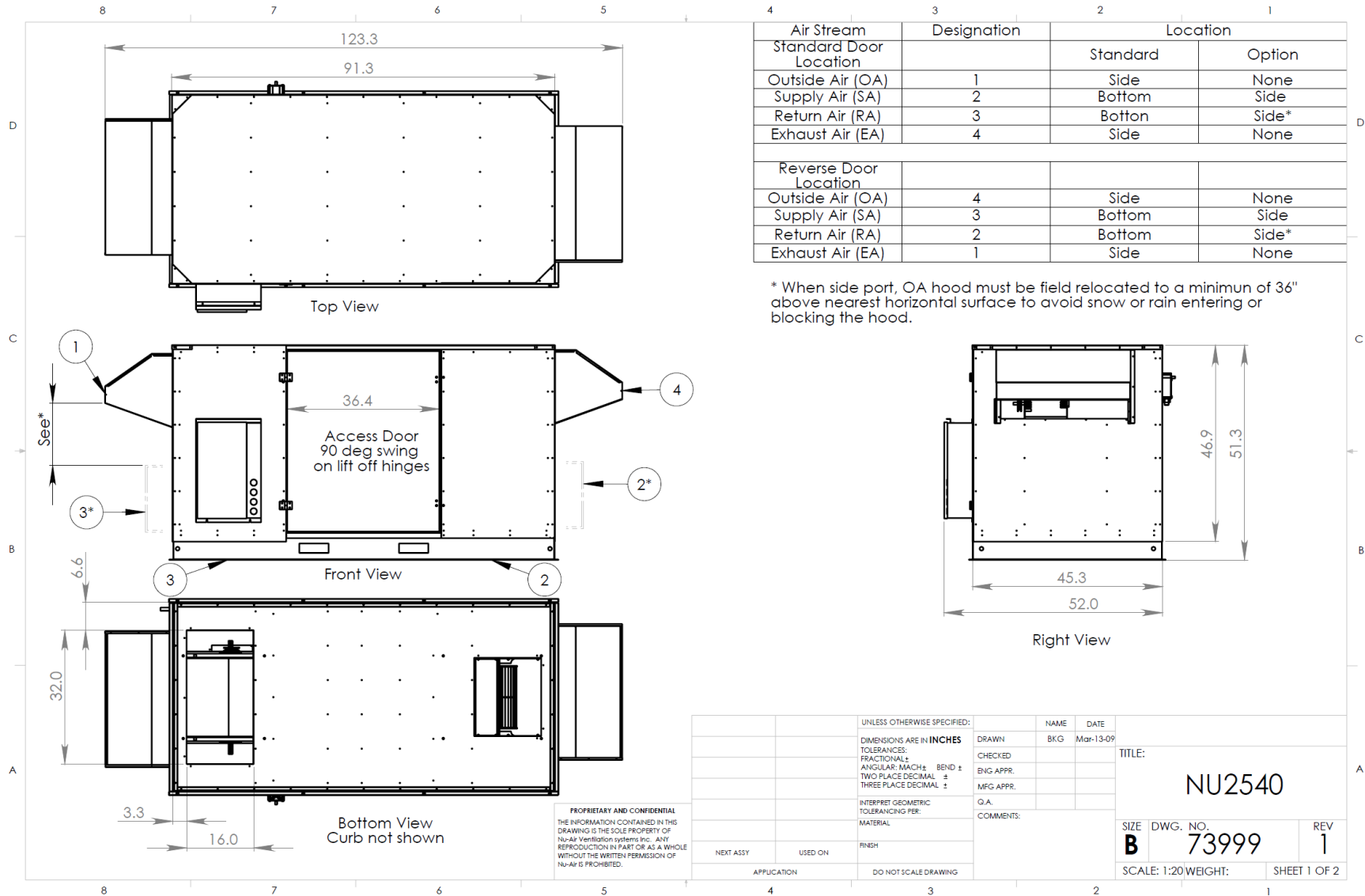
NU2035 & NU2540 ERV



NU2035 & NU2540 ERV with Face and By Pass

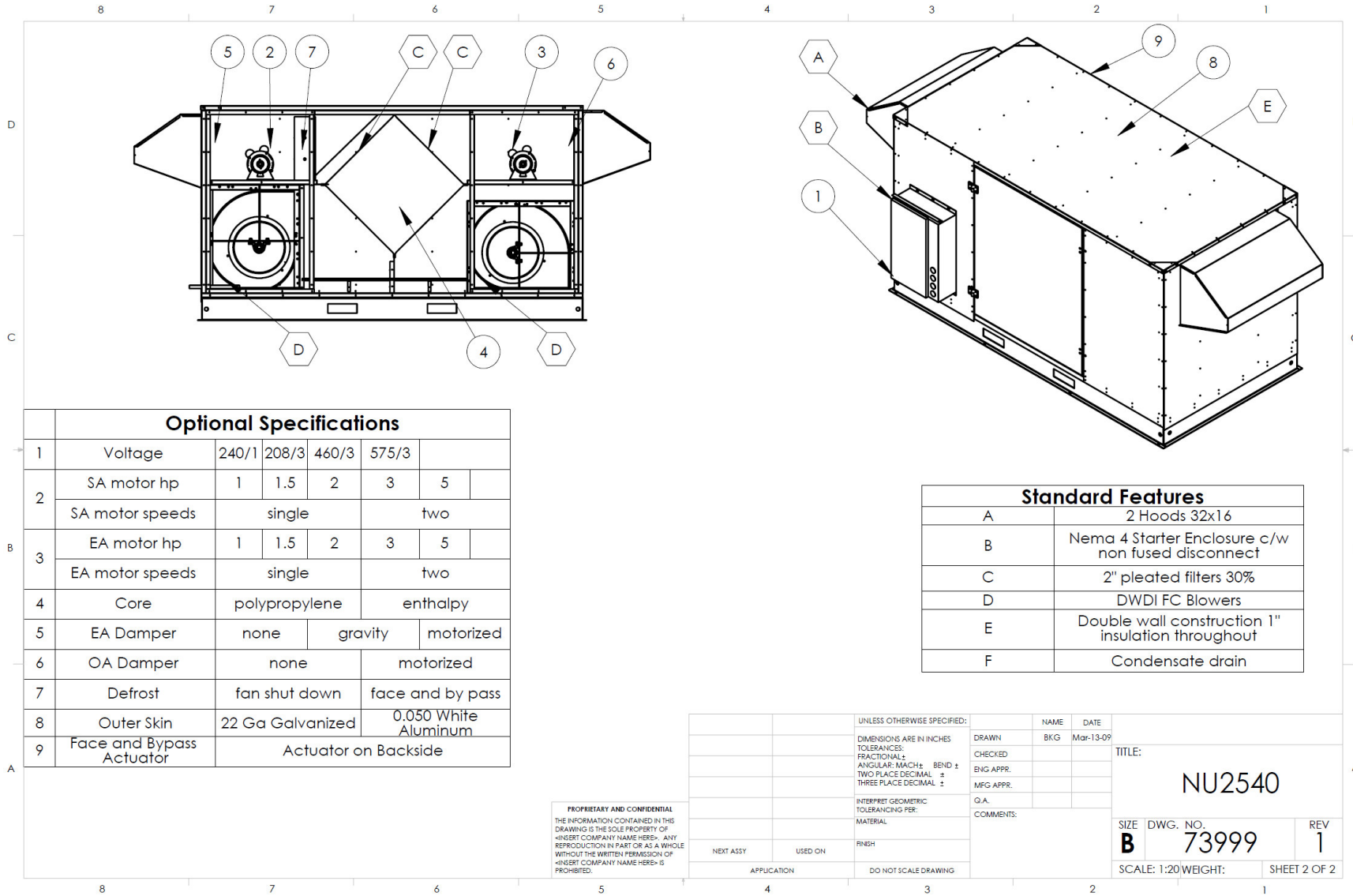


NU2540 DIMENSIONAL DATA



Revised Apr 22, 2009

NU2540 DIMENSIONAL DATA



Optional Specifications

1	Voltage	240/1	208/3	460/3	575/3	
2	SA motor hp	1	1.5	2	3	5
	SA motor speeds	single			two	
3	EA motor hp	1	1.5	2	3	5
	EA motor speeds	single			two	
4	Core	polypropylene			enthalpy	
5	EA Damper	none	gravity	motorized		
6	OA Damper	none			motorized	
7	Defrost	fan shut down			face and by pass	
8	Outer Skin	22 Ga Galvanized			0.050 White Aluminum	
9	Face and Bypass Actuator	Actuator on Backside				

Standard Features

A	2 Hoods 32x16
B	Nema 4 Starter Enclosure c/w non fused disconnect
C	2" pleated filters 30%
D	DWDI FC Blowers
E	Double wall construction 1" insulation throughout
F	Condensate drain

PROPRIETARY AND CONFIDENTIAL
 THE INFORMATION CONTAINED IN THIS
 DRAWING IS THE SOLE PROPERTY OF
 <INSERT COMPANY NAME HERE>. ANY
 REPRODUCTION IN PART OR AS A WHOLE
 WITHOUT THE WRITTEN PERMISSION OF
 <INSERT COMPANY NAME HERE> IS
 PROHIBITED.

UNLESS OTHERWISE SPECIFIED:		NAME	DATE		
DIMENSIONS ARE IN INCHES		DRAWN	BKG		
TOLERANCES:		CHECKED	Mar-13-09		
FRACTIONAL: ±		TITLE:			
ANGULAR: MACH ± BEND ±		<div style="text-align: center; font-size: 24pt; font-weight: bold;">NU2540</div>			
TWO PLACE DECIMAL ±				SIZE	DWG. NO.
THREE PLACE DECIMAL ±				B	73999
INTERPRET GEOMETRIC TOLERANCING PER:		Q.A.	REV		
MATERIAL:		COMMENTS:			
FINISH					
NEXT ASSY	USED ON				
APPLICATION	DO NOT SCALE DRAWING	SCALE: 1:20 WEIGHT: SHEET 2 OF 2			